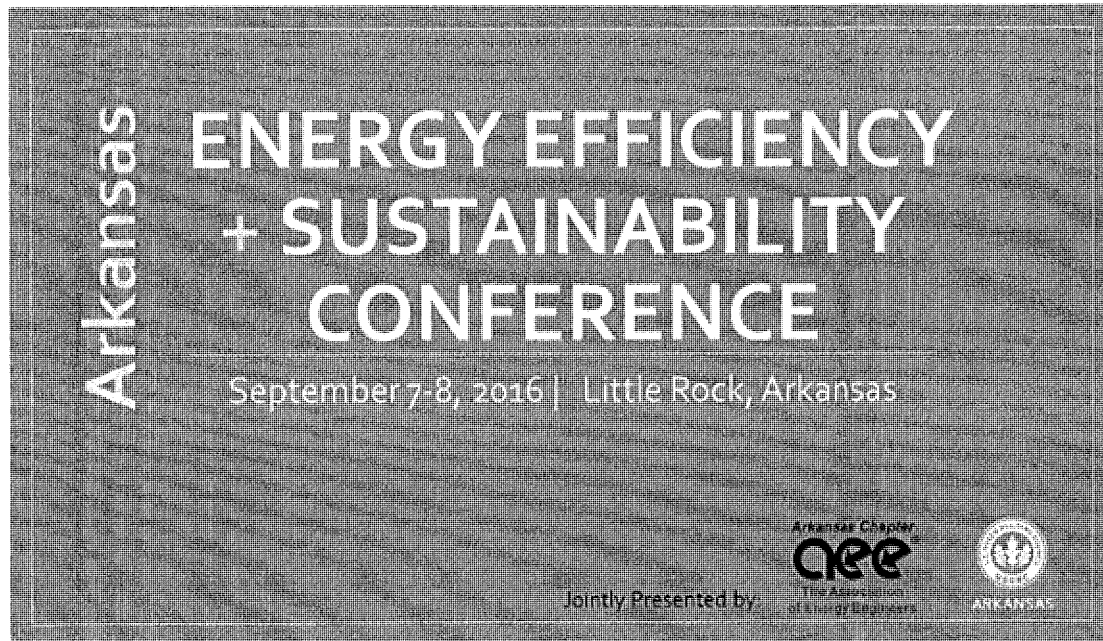


AR Energy Engineers & USGBC Join for 2016 Fall Conference.



[Info](#) | [Sponsorship](#) | [Hotel](#) | [Registration](#) | [Program](#)

**2016 Arkansas Energy Efficiency + Sustainability
Conference & Tradeshow
September 7-8, 2016 | Holiday Inn Airport | Little Rock, AR**

Joint Conference brings together strength of Arkansas Association of Energy Engineers and USGBC Arkansas organizations

- 20+ educational breakout sessions
- 300+ participants
- Advanced Practice Workshop: Learn to create an Energy Star Portfolio or dive deep into a Rating Systems Review of LEEDv4, SITES, and WELL.
- Tradeshow with 50+ vendors with the latest in energy technology and sustainability services, including a Vendor Reception
- Continuing Education Units for AIA/ USGBC/ PE. Earn up to 12 hours.
- Tours of LEED Platinum buildings.
- Conference Registration fees from \$125, with discounts for members and early registration before August 25
- Conference Hotel is Holiday Inn Airport, 501-490-1000. Preferred Rates.
- [Register online](#)

AAEE: Erik Swindle, info@arkansasaee.org | 501-372-2900
USGBC: Ginny Kurrus, gkurrus@usgbc.org | 501-412-8241

Schedule

Tuesday, September 6, 2016 (optional, no cost for registered participants)

4:30-6:30 LEED NC Platinum Building Tour of Heifer International HQ. Meet at Heifer Parking Lot.

Wednesday, September 7, 2016

Conference and Trade Show at Holiday Inn Airport Conference Center

7:30-8:30 Onsite Registration

8:30-9:30 Opening Plenary with Little Rock Mayor Mark Stodola

9:30-6:00 Trade Show Open

9:30-10:30 Session 1 Breakouts

11-12:00 Session 2 Breakouts

12:00-1:30 Lunch and Keynote Speaker

1:30-2:30 Session 4 Breakout Session

3:00-4:00 Session 5 Breakout Sessions

4:00-6:00 Reception with Vendors in Trade Show

6:00 - Dinner on your own.

Thursday, September 8, 2016 Workshops and Tour #2

8:00-10:00 Session 6 Energy Star Workshops (2 hours, bring a years' worth of energy and water bills)

10:00-12:00 Session 7 Energy Star Workshops repeat (2 hours, bring a years' worth of energy and water bills)

8:00-12:00 Session 8 Rating Systems Review for Advanced Practitioners LEEDv4, WELL, and SITES

12-1:30 LEED Platinum EBOM Building Tour of Clinton Presidential Center. Meet at Front Entrance.

Program

- **Educational Sessions** with 3 concurrent tracks in Sustainability, Commercial & Industrial EE, Schools and Government. Topics Include Commissioning, Lighting, EE Policy Update, PACE, Citywide Sustainability, Designing Green Schools, School District Energy Savings Case Study, HVAC Performance, Controls and Automation. Earn up to 12 hours of continuing education.
 - **Trade Show** featuring the latest in energy products and sustainability services
 - **Tours of LEED** Platinum Heifer International and LEED Platinum Clinton Presidential Center
 - **Wednesday Workshops** to get your project started in Energy Star Portfolio Manager or Advanced Practice Workshops in the newest rating systems : LEEDv4, WELL, and SITES
-

Call for Proposals (due July 15, 2016)

We strive for a well rounded program of technical education that will appeal to architects, contractors, energy engineers, and owners. Preference will be given to proposals with content comprised mainly of performance data or case studies. We are seeking 4 more presentations by July 15. Simply complete the [simple 1 page form](#).

Registration Fees

Our joint conference provides an exceptional program of technical education at an affordable price. [Registration open now](#)

- **AAEE or USGBC members before Aug 25: \$100**
 - **Nonmembers before August 25: \$125**
 - **Prices increase \$25 after August 25**
-

Sponsorship Information

Our sponsors and trade show vendors keep this conference relevant and affordable.

- **Trade Show Hours are Wednesday, September 7, 9:30-6.**
- **Sponsorship Visibility Levels from \$750. 10 x 10 Booths from \$500.**

[2016 Sponsor Packet](#)

- [Link to Pay for Sponsorship or Booth online](#)
- [Prior Year Sponsors and Vendors list](#)
- **Sponsorship Questions, contact Erik Swindle, info@arkansasaee.org or 501-372-2900.**