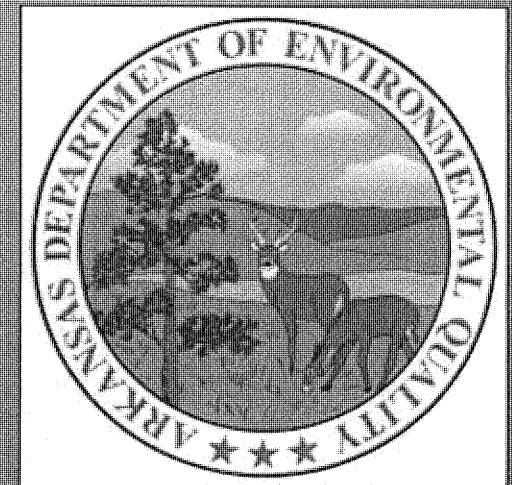
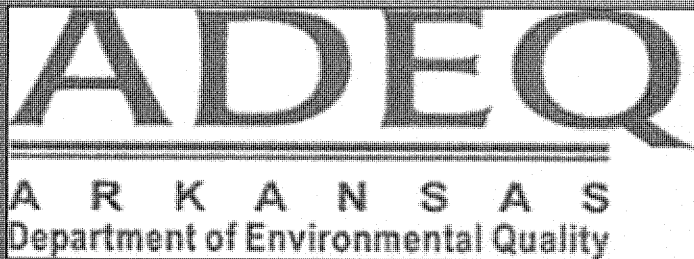
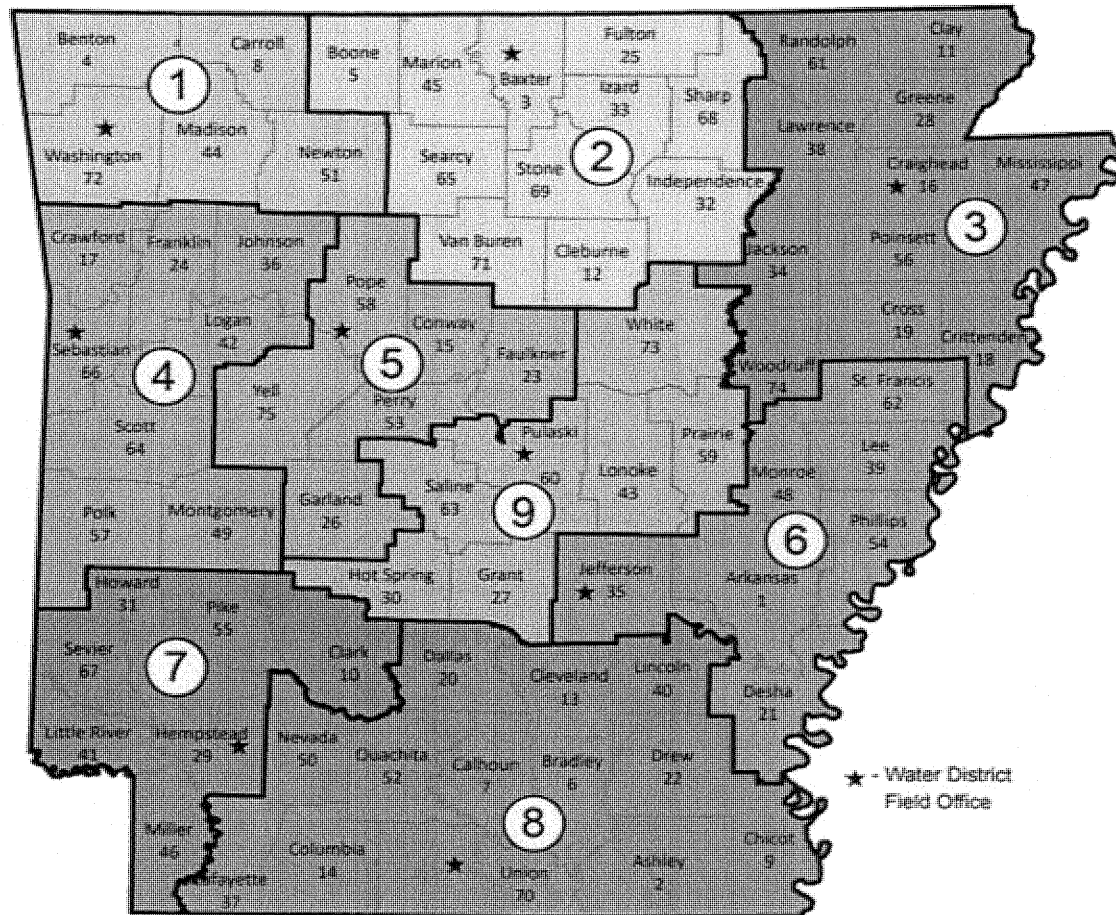


The Work of a Water Inspector

AEF Annual Conference
Clark Baker – ADEQ
Office of Water Quality



FIELD OFFICES & PERSONNEL



* 4 Vacancies

- 21 Inspectors
- 2 Administrative Specialists
- 2 Supervisors
- Manager

Routine Inspections of Permitted Facilities

- EPA Required Inspections:
 - Compliance Evaluation Inspections (CEI)
 - Major Municipals are inspected once every 2 years
 - Major Industrials are inspected once every 2 years
 - Minor Municipals are inspected once every 5 years
 - Minor Non-Municipals are inspected once every 5 years
 - Pretreatment Systems are inspected twice per 5 years
 - Compliance Sampling Inspections (CSI)
 - ADEQ must conduct 20 CSIs per year.
 - 4 Major Municipals, 4 Major Industrials, 4 Minor Non-Municipals, and 8 Minor Municipals

2015 Inspection Results

Individual Discharge Permits		
MAJORS		
Compliance Evaluation		
	Industrials	21
	Municipals	39
Reconnaissance		
	Industrials	4
	Municipals	13
Compliance Assistance		
	Industrials	1
	Municipals	1
TOTAL		79
MINORS		
Compliance Evaluation		
	Industrials	107
	Municipals	58
Reconnaissance		
	Industrials	23
	Municipals	34
Compliance Assistance		
	Industrials	1
	Municipals	4
TOTAL		227

Stormwater Permits	
Industrial Stormwater (ARR000000)	227
Construction Stormwater (ARR150000)	161
MS4 Programs	15
TOTAL	403

Other General Permits	
	54

Complaints		
	Construction Stormwater	16
	Individual Discharge	21
	State No-Discharge	10
	Industrial Stormwater	6
	General Permits	5
	MS4 Programs	4
	Other/Unpermitted/Unregulated	223
TOTAL		285

Pretreatment & Industrial Users		
	Pretreatment Compliance	5
	Industrial Users	12
TOTAL		17

Sanitary Sewer/Collection System Evaluations		
	Major Industrials	2
	Major Municipals	27
	Minor Industrials	7
	Minor Municipals	33
TOTAL		69

Short Term Activity Authorizations	
	15

State No-Discharge Inspections	
	97

Fish Kills	
	7

Emergency Responses/Assessments	
	100

Unpermitted/Unregulated Recons	
	16

Oil & Gas Program	
Pad & Pit	1441
Spill Response	142
State No-Discharge	47
Complaints	16
Emergency Response	16
Short Term Activity Authorizations	10
Salt Water Disposal Wells	8
Industrial Stormwater	5
Assessments	2
TOTAL	1687

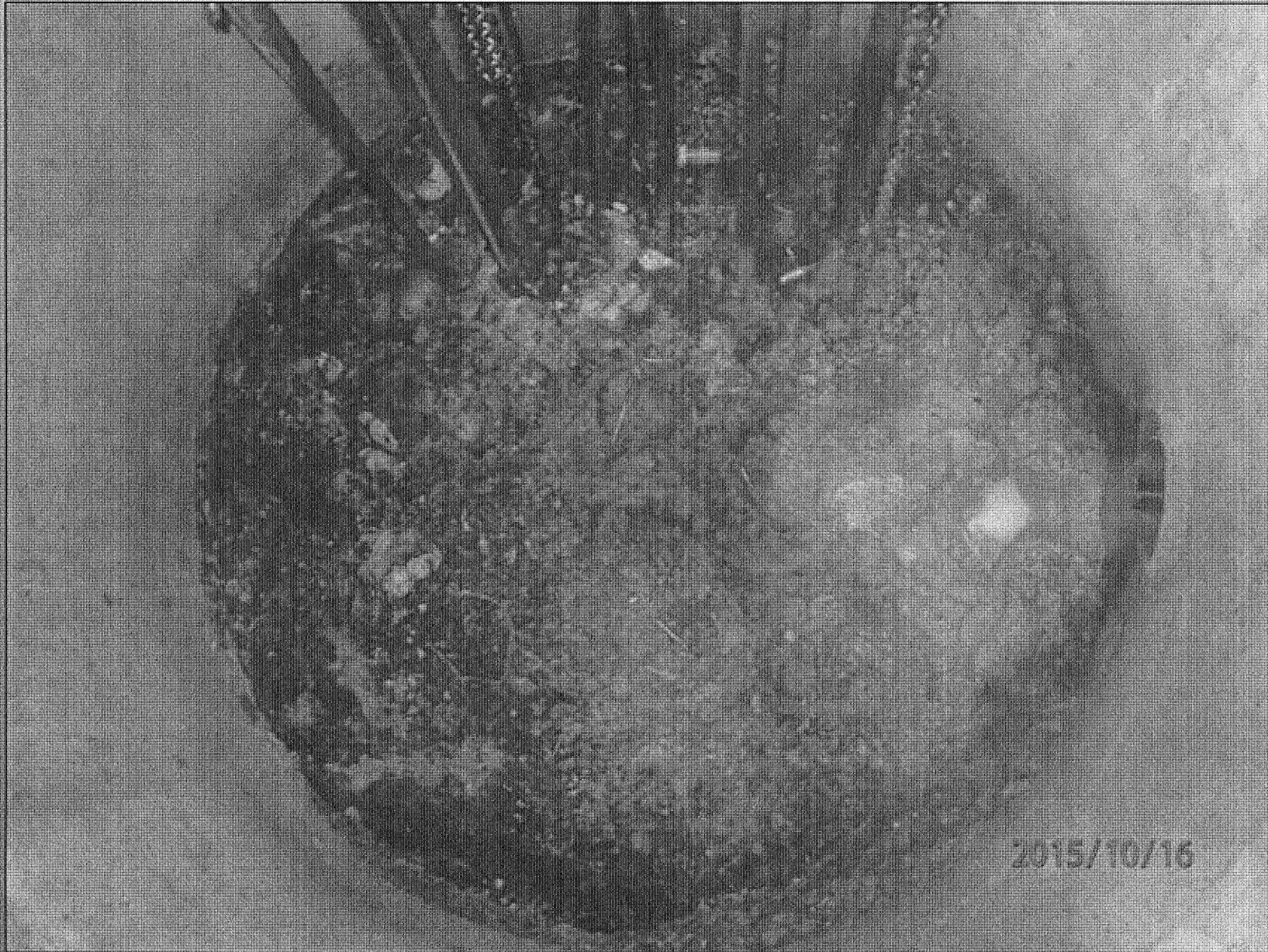
Compliance Sampling Inspections		
	Major Industrials	5
	Major Municipals	4
	Minor Industrials	4
	Minor Municipals	9
TOTAL		22

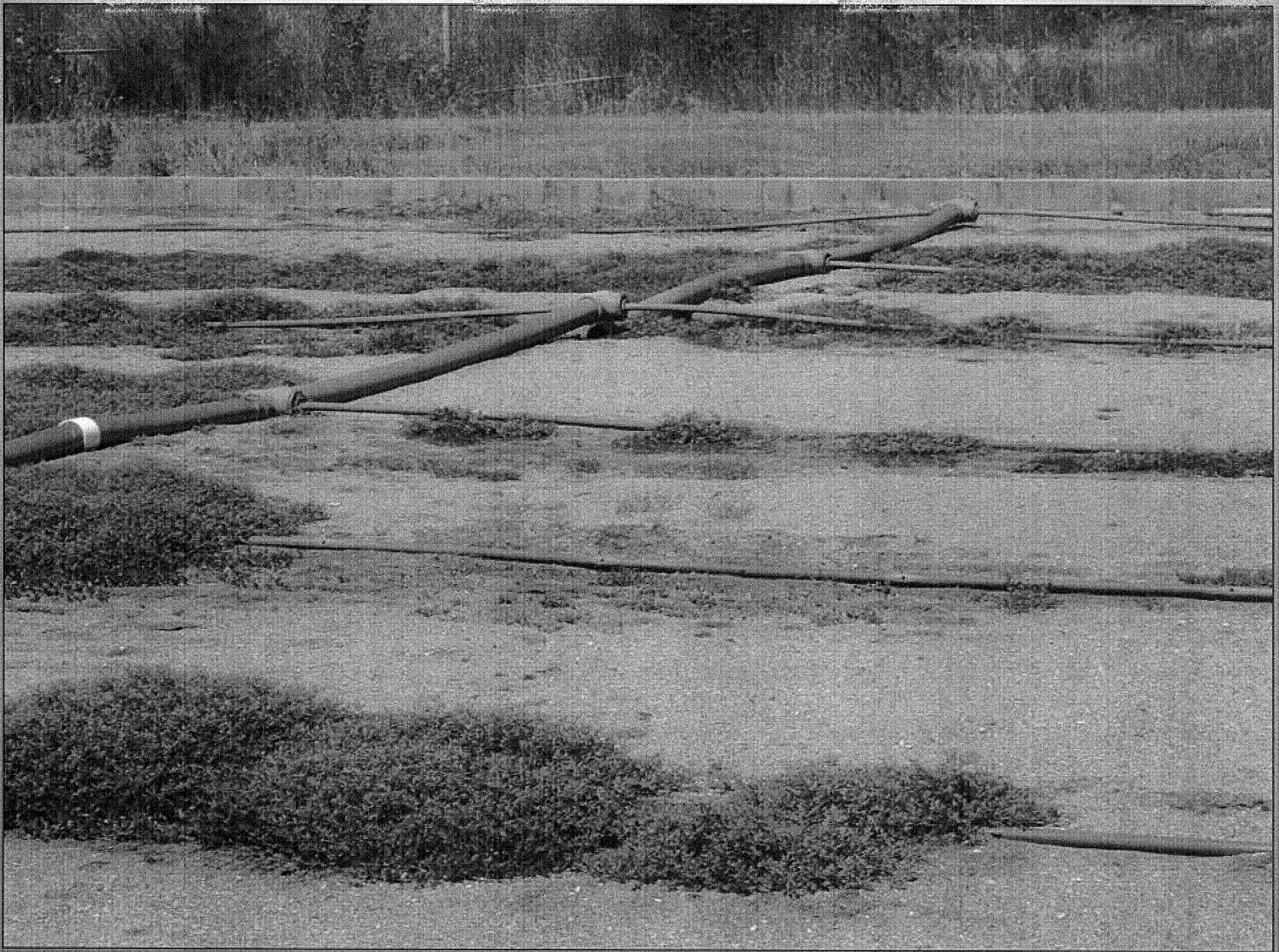
Water Samples Collected	
	>2100

Other Inspections

- Complaint Investigations
 - Is there a violation of Arkansas Environmental Law
 - Causing pollution
 - Placing waste
- Complaint Prompted Inspections of Permitted Facilities
 - Wastewater
 - Construction Stormwater
 - Small construction site (≥ 1 acre and < 5 acres)
 - Large construction site (≥ 5 acres)

Common Problems Discovered During Routine Inspections









Larger Problems Discovered During Routine Inspections





2014/11/21

Common Problems Discovered During Complaint Investigations

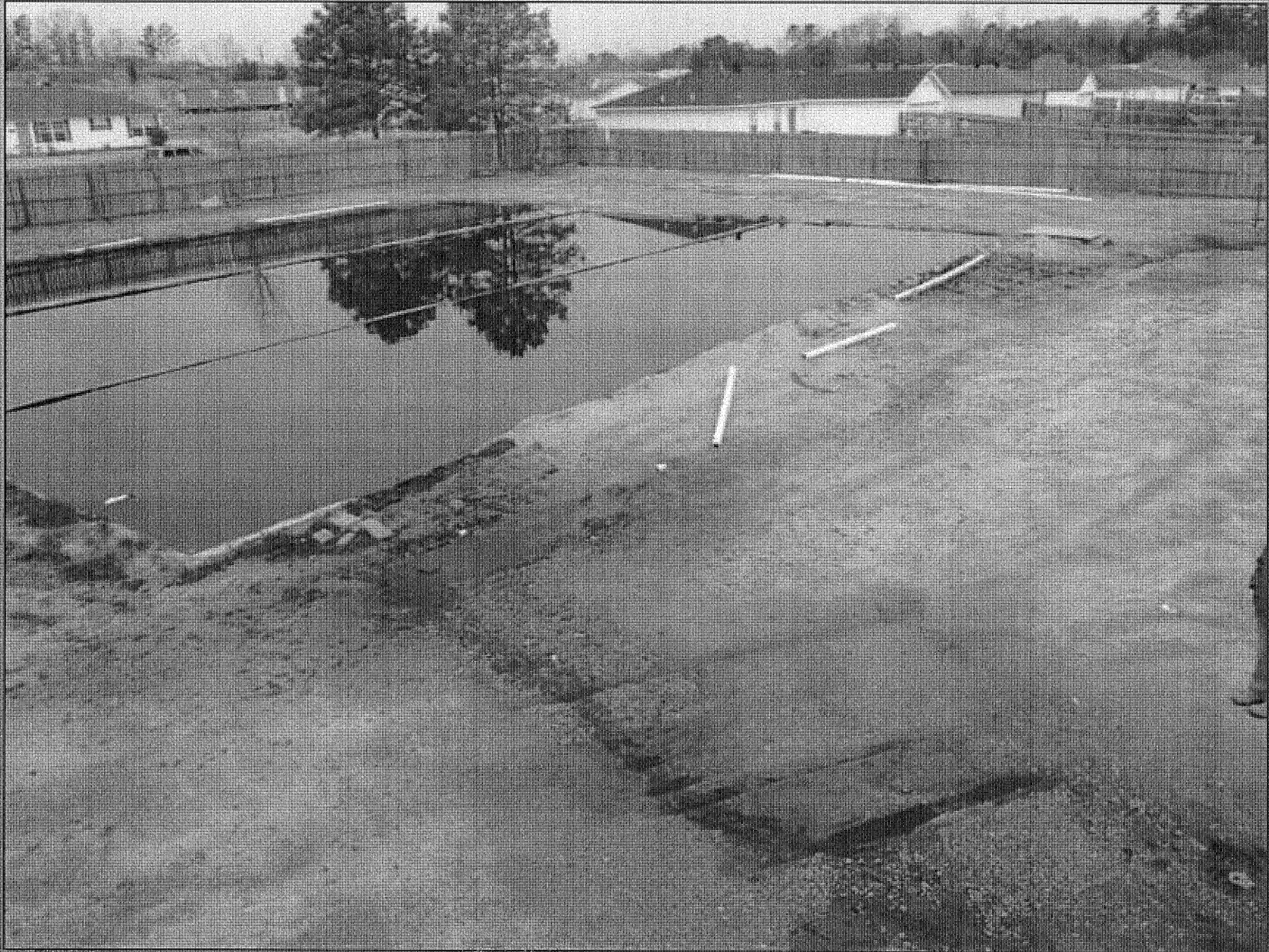






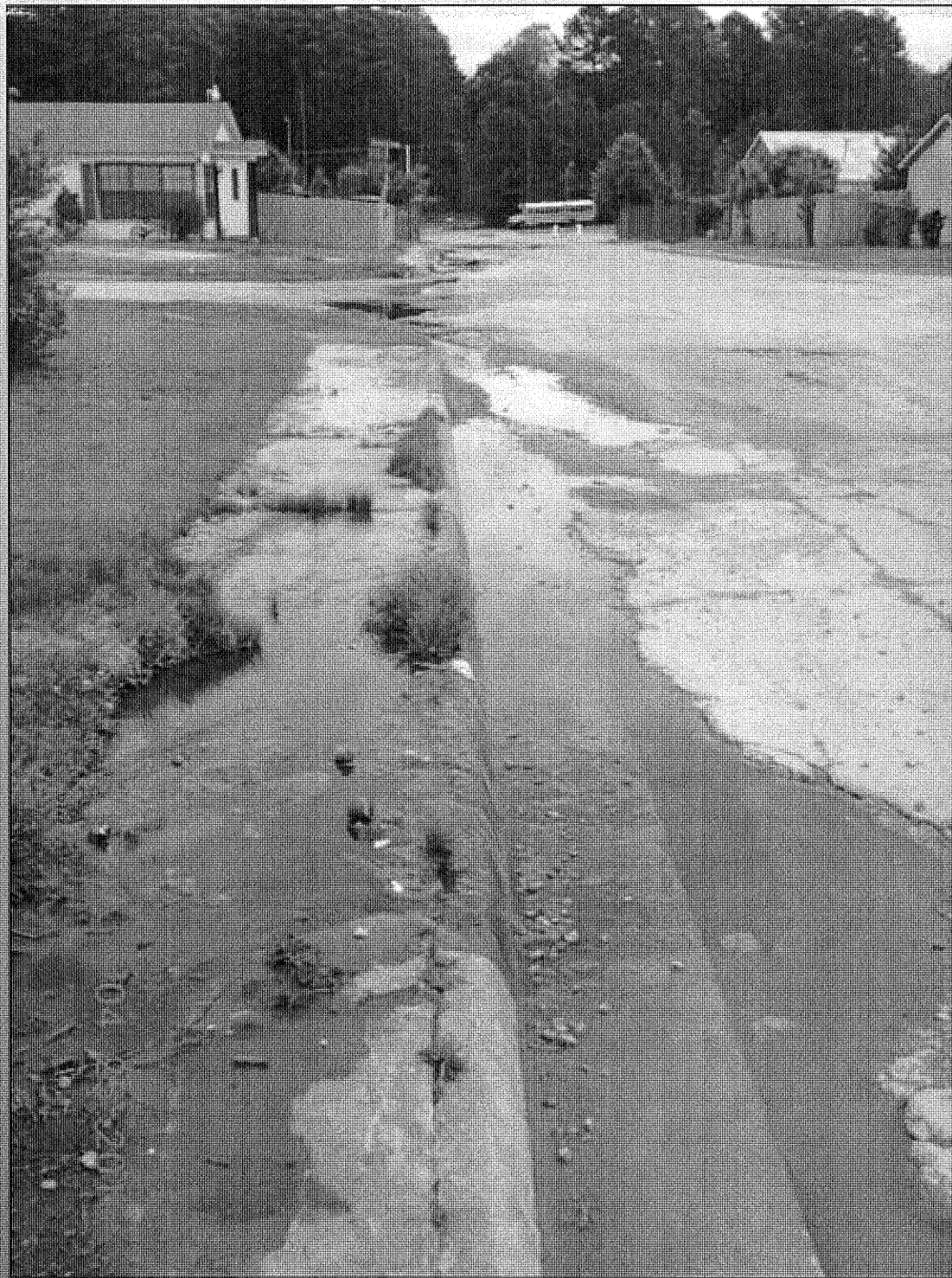


Larger Problems Discovered During Complaint Investigations





2015/07/21





2015/04/03



Google earth

© 2016



300 ft









2014/10/16

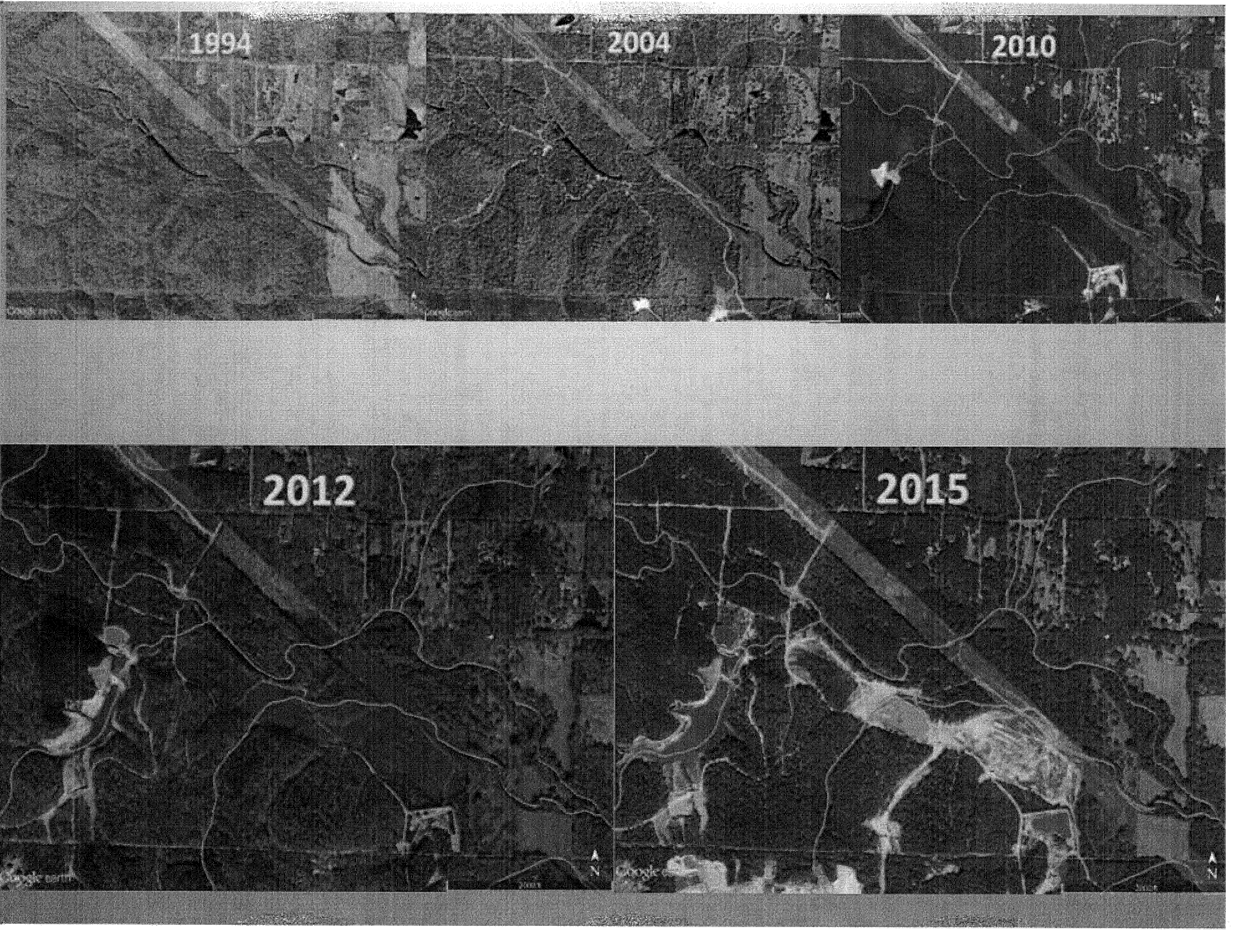
1994

2004

2010

2012

2015



Up Stream Sample Site

2.29 NTU



Regulation 2: Water quality standards for turbidity

Base Flow: 21 NTU

Storm-Flow: 40 NTU

15.1 NTU



Regulation 2:
Water quality standards for turbidity

Base Flow: 21 NTU
Storm-Flow: 40 NTU



2.01 NTU



38.4 NTU

Regulation 2:
Water quality standards for turbidity
Base Flow: 21 NTU
Storm-Flow: 40 NTU



4.68 NTU



136 NTU

Regulation 2:
Water quality standards for turbidity

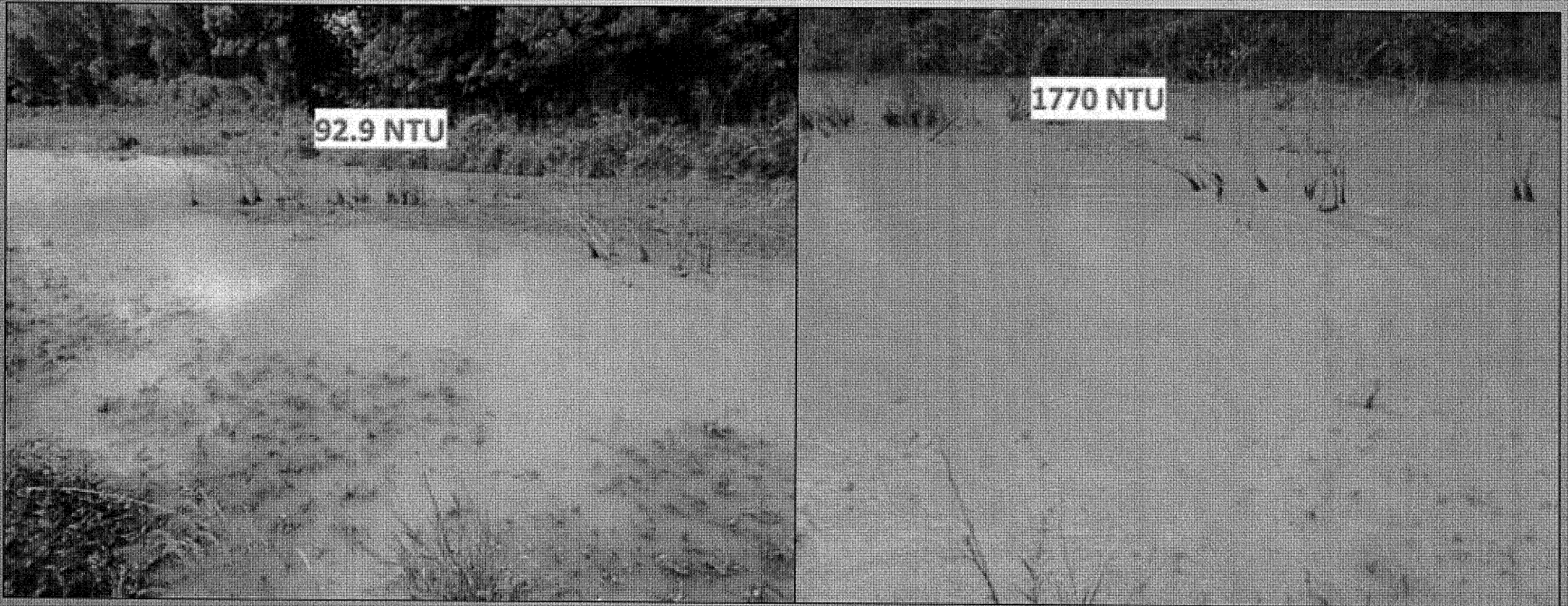
Base Flow: 21 NTU

Storm-Flow: 40 NTU



Regulation 2:
Water quality standards for turbidity

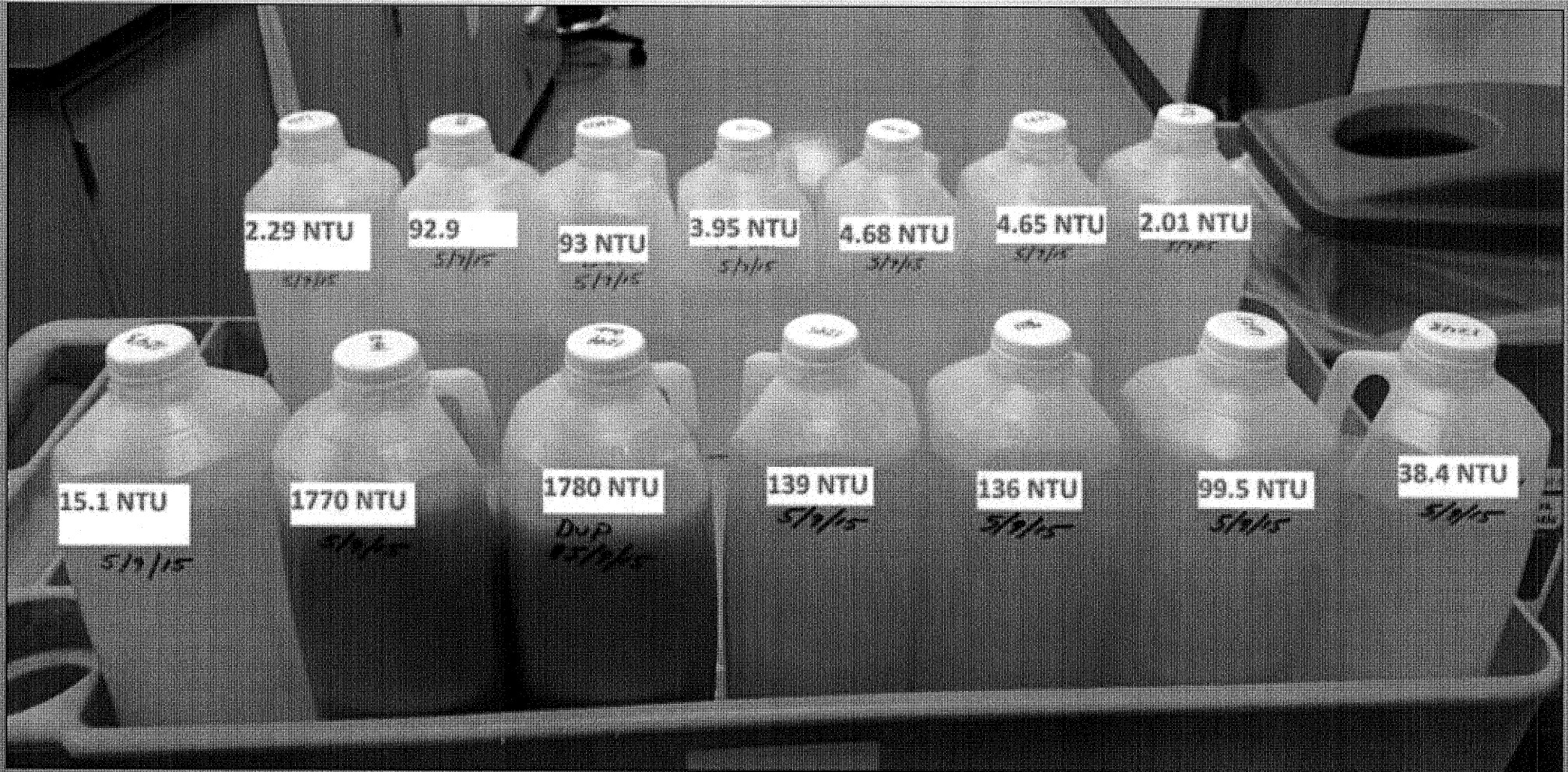
Base Flow: 21 NTU
Storm-Flow: 40 NTU



Regulation 2:
Water quality standards for turbidity

Base Flow: 21 NTU

Storm-Flow: 40 NTU



Questions?

- Clark Baker
 - Inspector Supervisor
 - 501-682-0657
 - bakerclark@adeq.state.ar.us

